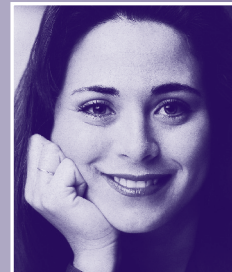


2011 has been  
**CHALLENGING**  
for many families...



## **DEMAND FOR SERVICES INCREASED 26% IN 2011**

### **HELP MEET THE CHALLENGE**

All new and increased donations will be matched dollar for dollar by a generous foundation.  
Make a gift in 2011 to ensure SHALVA can meet increased client needs.

**SHALVA 773-583-(HOPE)4673 [www.shalvaonline.org](http://www.shalvaonline.org)**

# Your donation is **POWERFUL**

## **YOUR GIFTS ARE IMPORTANT. WE WILL USE THEM WELL.**

- \$3750 provides one year of therapy for 1 domestic violence victim
- \$1050 provides emergency intervention for 1 domestic violence victim
- \$600 provides 4 weeks of group therapy
- \$100 provides 1 week of SHALVA's 24-hour crisis line
- \$50 provides emergency food for 1 domestic violence victim

**...a family's safety**

**...priceless.**

SHALVA, a partner in serving our community, a special grant recipient of the Jewish United Fund/Jewish Federation.